



myCSC
iOS App User Guide

Release 1.0.3

Anything Binary
www.anythingbinary.com

June 24, 2011

TABLE OF CONTENTS

Introduction	3
Summary Screen	4
Menu Options	5
Detailed Chart	6
Open CSC Site	7
Map Location	8
Set Chart Location	9
Charts Near Me?	10
Info Screen and Check for Updates	12
Troubleshooting and Additional Assistance	13

Introduction

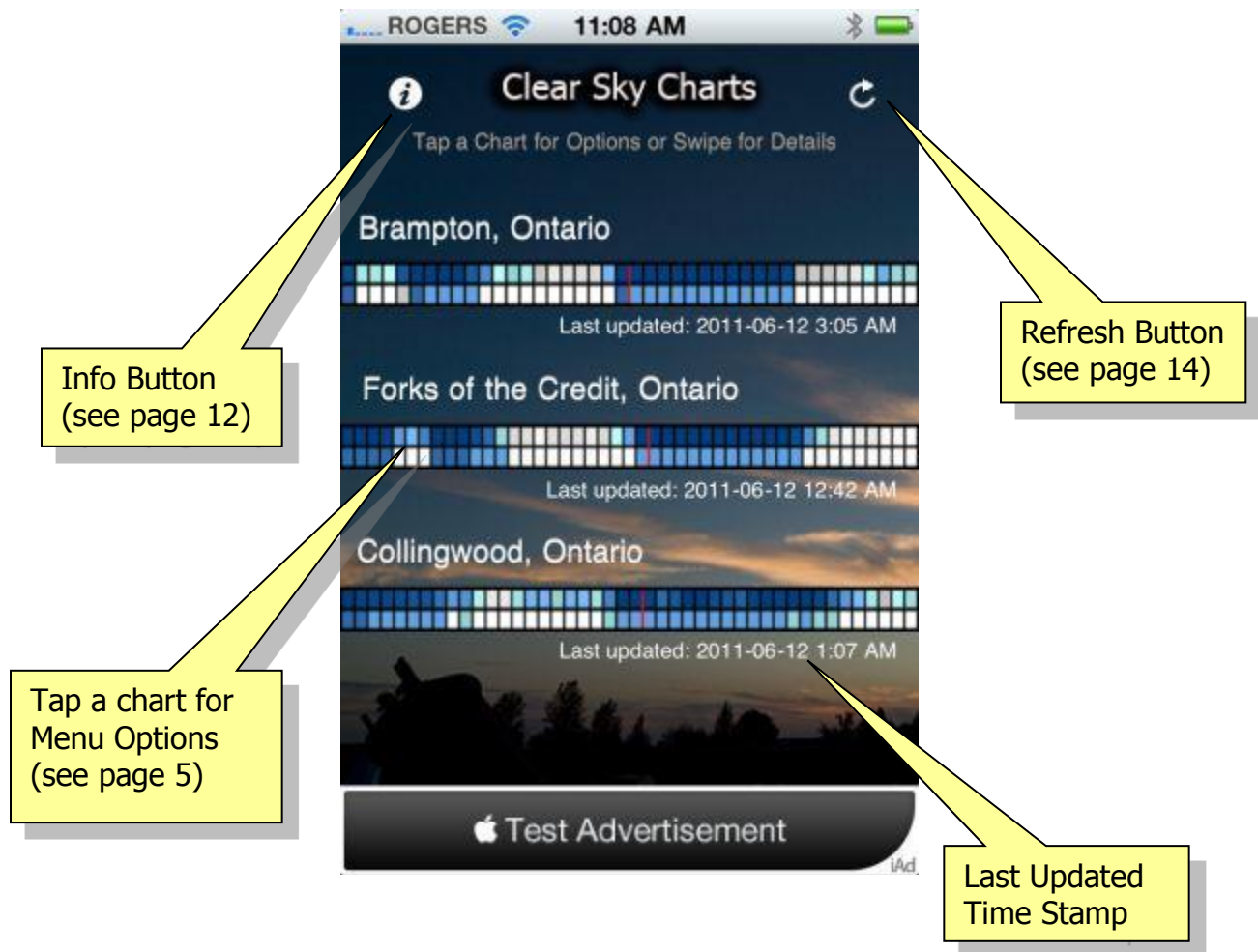
This document describes the features and operation of the myCSC iOS app for the iPhone, iPod Touch and iPad devices. The app requires iOS 4.0 or greater and a 3G or Wi-Fi internet connection. myCSC provides quick access to information on any three Clear Sky Chart locations that you want to monitor from the thousands of locations available across North America. The Clear Sky Charts are used by amateur astronomers to monitor local nightly observing weather conditions. A full explanation on how to interpret these charts which were designed by Attila Danko is beyond the scope of this guide but you can learn about them at the Clear Sky Charts home page <http://cleardarksky.com/csk/>.

The first time you launch the application it defaults to three popular annual star party locations; Stellafane in Vermont, the Texas Star Party and Starfest in Ontario. One of the first things you will want to do after reviewing this guide will be to select your own three favorite Clear Sky Chart locations as explained starting on page 9.



Summary Screen

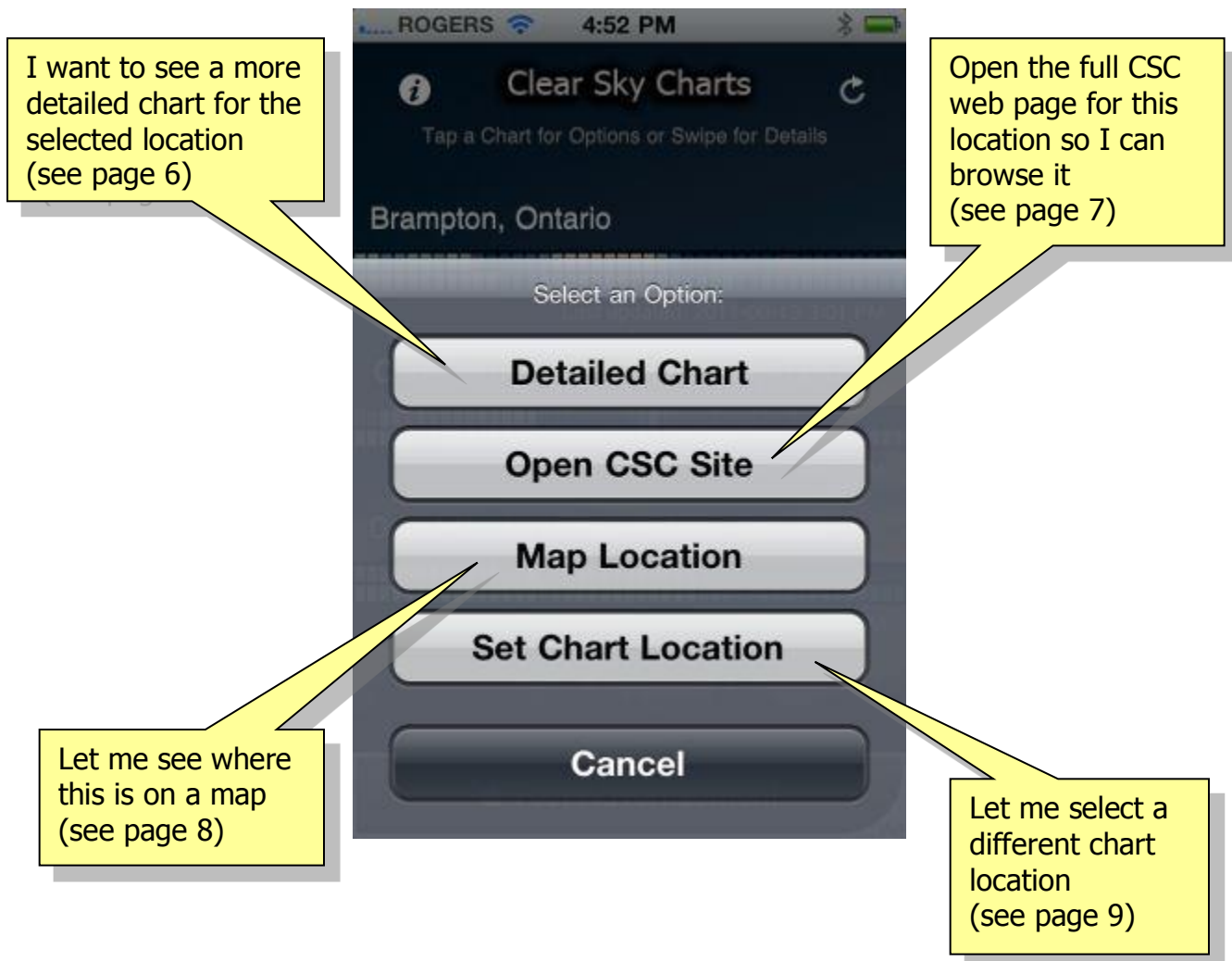
The Summary Screen contains a miniature preview of the three Clear Sky Chart locations that you select. The top row of colored squares represents cloud cover and the lower row represents transparency for the next 48 hour period following the last updated time stamp. Each colored square represents a single one hour period. The thin red lines indicate local midnight which will help in deciding whether it will be clear after dark.



Menu Options

Tap on any of the three preview charts to see a menu of additional options. Each of these options will be explained in detail in the following sections. Tap the Cancel option if you want to return to the Summary Screen.

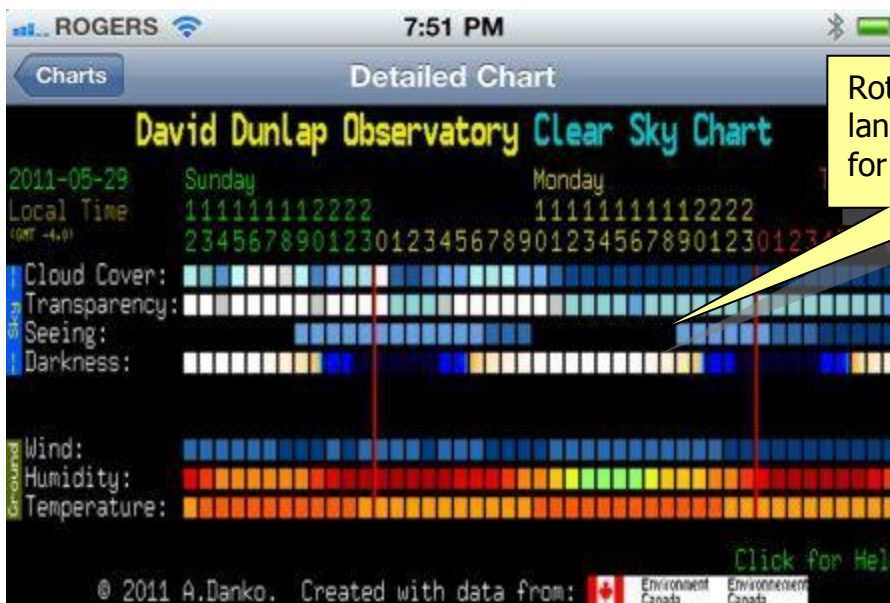
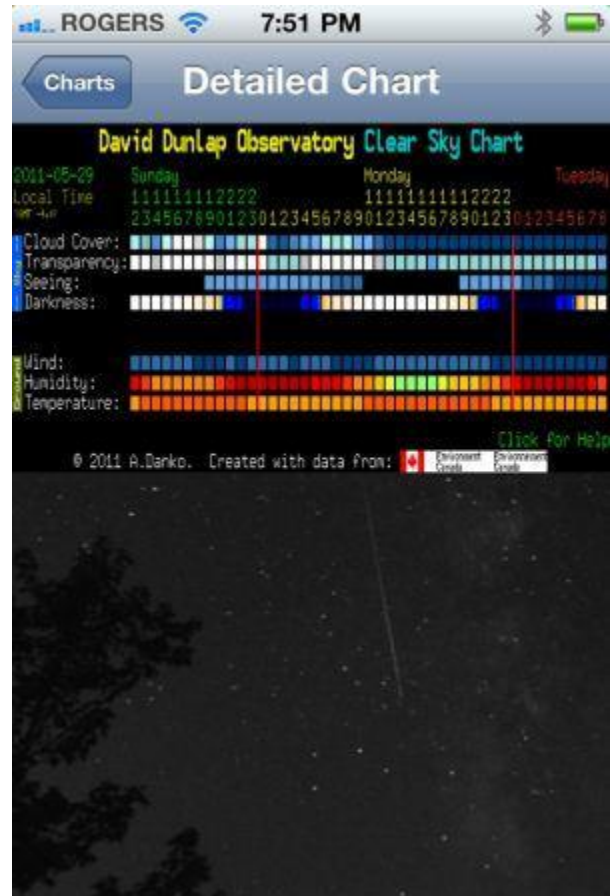
Note: Swipe on any of the preview charts with a single finger to jump to the Detailed Chart screen as a shortcut.



Detailed Chart

The Detailed Chart contains much greater detail than the preview chart. It has an hourly scale by day across the top which provides a clearer view of the forecast. In addition to Cloud Cover and Transparency it also includes forecast data for Seeing, Darkness, Wind, Humidity and Temperature. A complete explanation on how to read these detailed charts can be found at Attila Danko's Clear Sky Charts home page <http://cleardarksky.com/csk/>.

Shortcut Tip: Swipe a finger across any of the preview charts to jump directly to the Detailed Chart view.

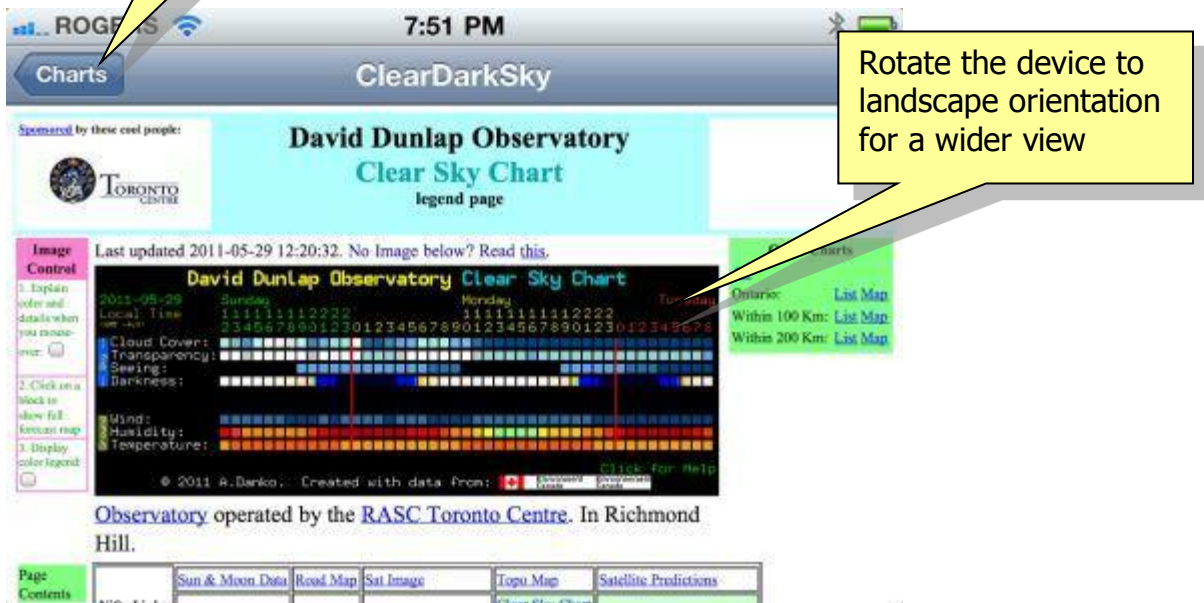


Open CSC Site

myCSC contains a built-in web browser view that allows access to the full Clear Sky Charts page associated with each preview chart. It works just like mobile Safari but allows you to return to the Summary Screen without leaving the app. Just tap the Charts button on the top navigation bar when done.



Tap Charts button to return to Summary Screen



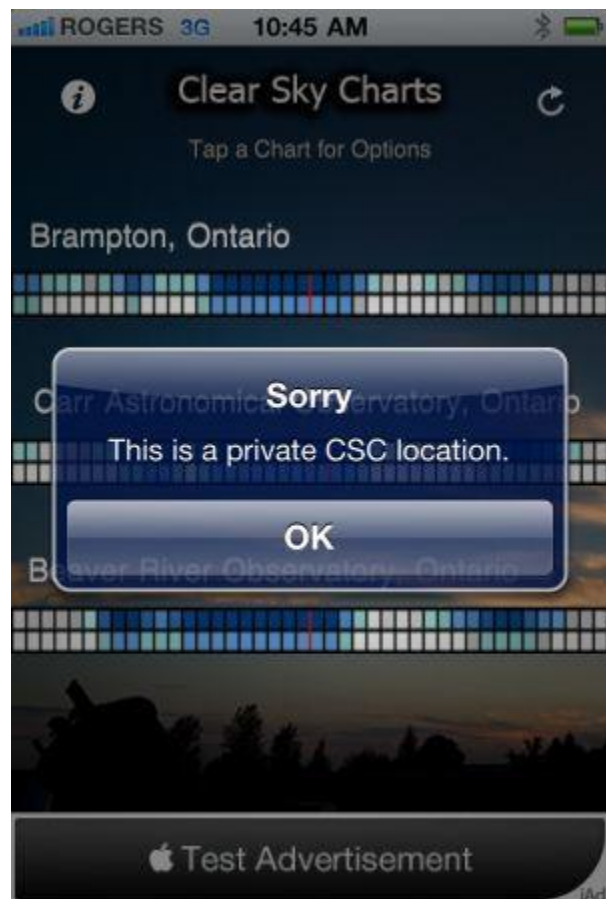
Rotate the device to landscape orientation for a wider view

Map Location

Map Location is a handy tool to view the actual chart location on Google Maps without leaving the myCSC application. You can zoom in, move around or choose the Satellite or Hybrid map views. Some CSC locations are private and do not publish their latitude and longitude information. Tap the Charts button on the top navigation bar to return to the Summary Screen when done.

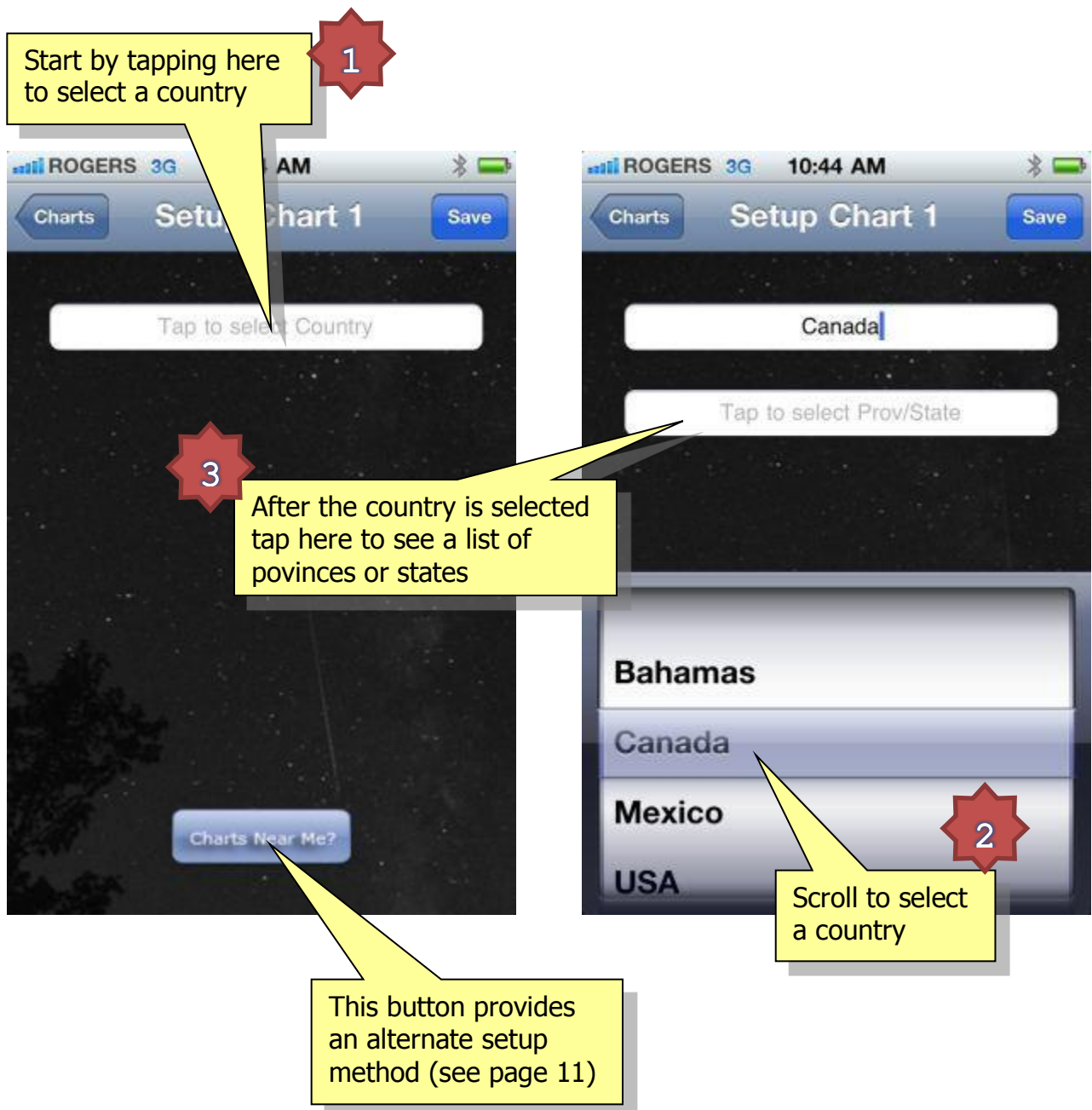


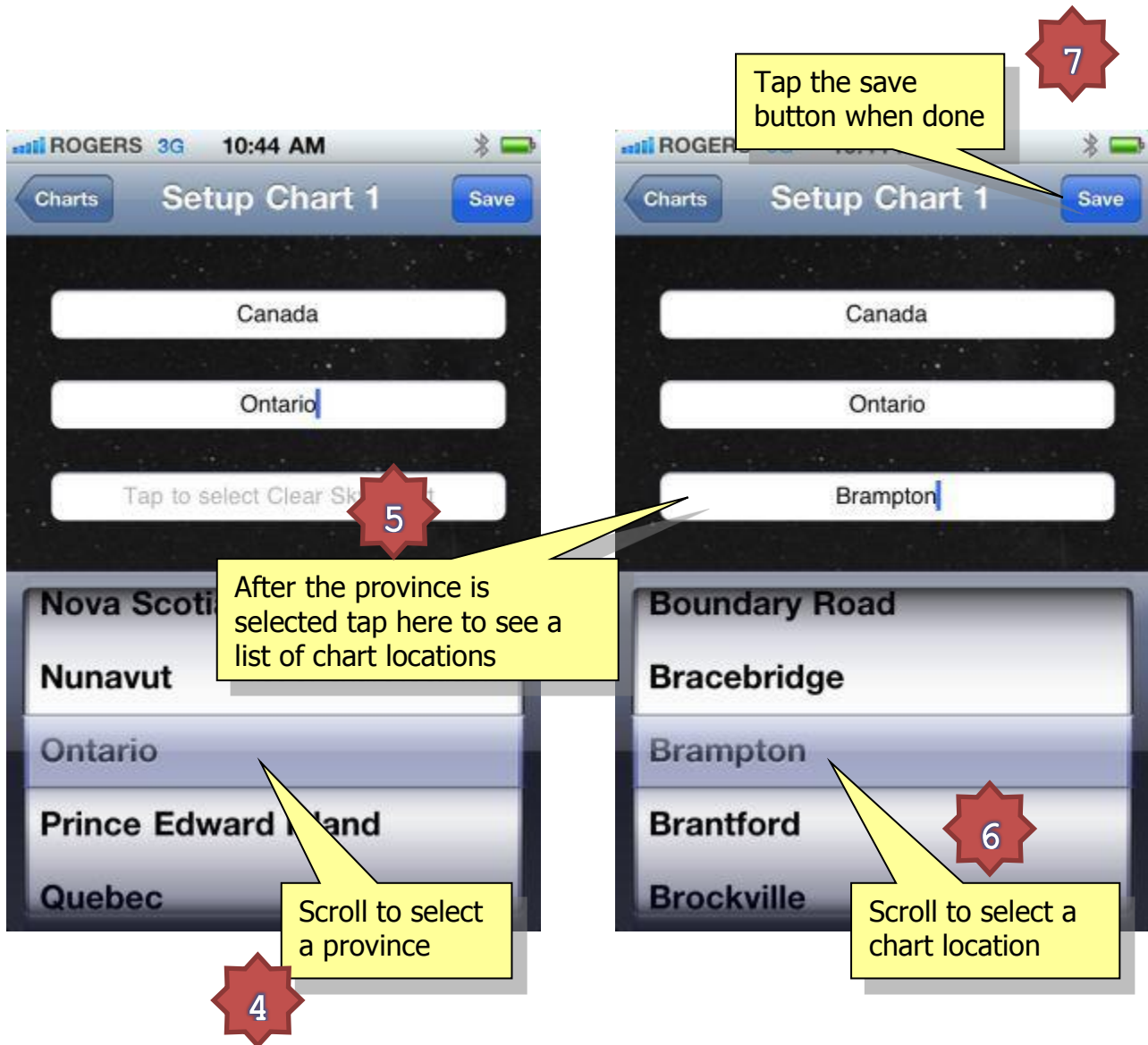
Latitude and Longitude



Set Chart Location

There are over 4000 chart locations in the myCSC database and frequently more are being added. There are two methods to select the chart locations on the Summary Screen. The first method requires that you select a Country using the picker view followed by a Province or State from the list presented. Once the Province or State is selected you can choose from the available Clear Sky Charts in that area. Finally tap the Save button on the navigation bar to return to the Summary Screen where you will see the new chart added.



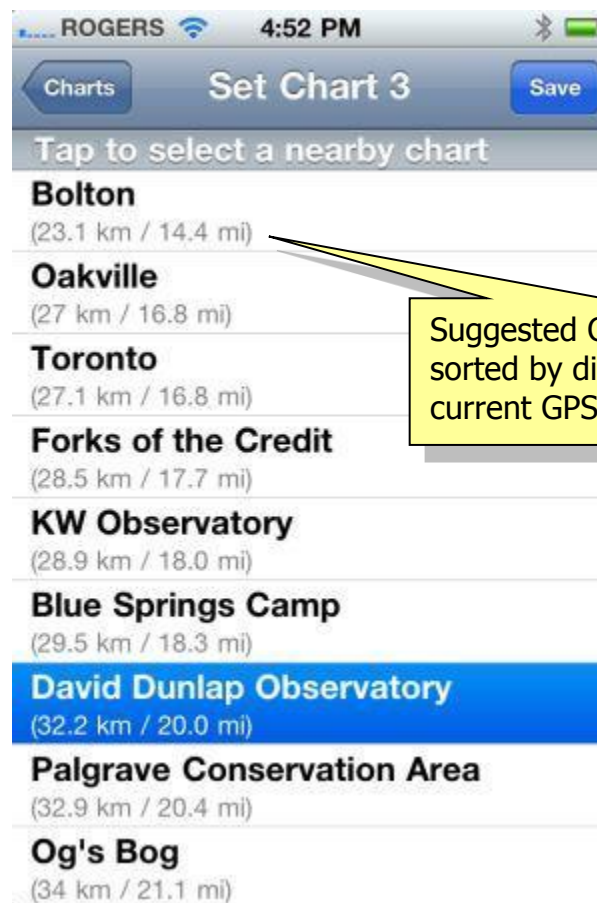


Charts Near Me?

Charts Near Me?

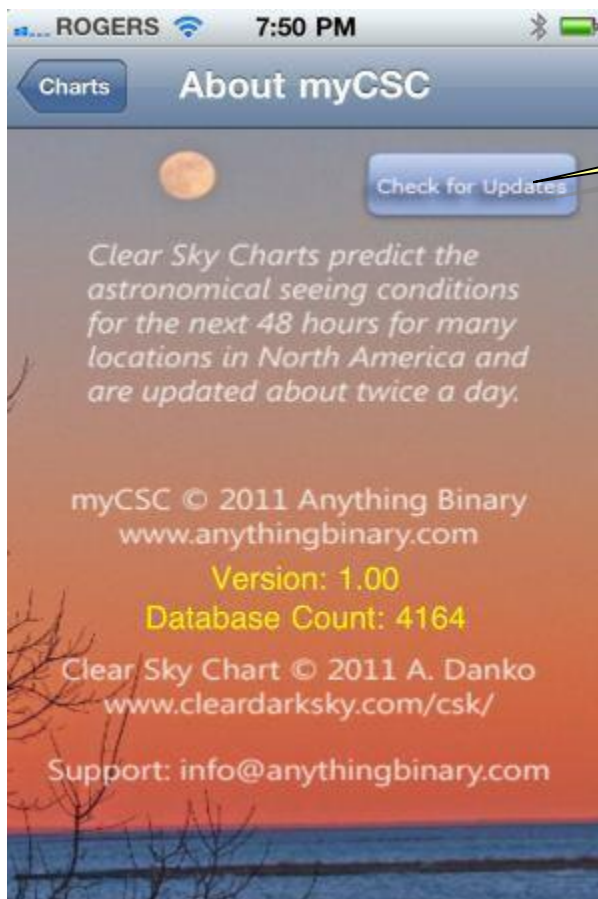
The Charts Near Me button on the bottom of the Set Chart # screen provides a second quicker method to locate Clear Sky Chart locations that are within a radius of about 60 kms (40 mi). It requires the Location Services feature to be available on your device. Nearby sites are listed in order of ascending distance in a table view. Simply tap the entry that you want and then tap the Save button on the top navigation bar.

Note: Only charts that publish their latitude and longitude will be included in the list of nearby chart locations.

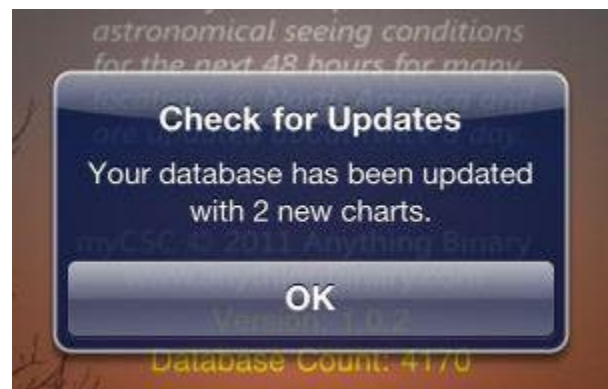


Info Screen and Check for Updates

The info button on the Summary Screen provides another view that includes some useful information including the number of chart locations in your database, the version number of the app and a button that you can use to check for updates to the database.



Click this button to check for any new chart locations that have been added



An alert will display to advise whether there are any new chart locations added to the database or not. Depending on the number of new charts being added the update may take a minute or two to complete so be patient.

Troubleshooting

myCSC requires an internet connect to retrieve updates. If your device is in Airplane mode or you are without Wi-Fi or 3G service you will see the following message.



The Clear Sky Charts are updated by Attila Danko about every twelve hours (twice daily). To keep the app responsive when moving between views, the Summary Screen is only refreshed once every hour. The timestamps shown below the charts are a good indicator of when they were last updated but you can always force a screen refresh using the Refresh Button in the top right corner of the Summary Screen as shown on page 4 of this guide. The timestamp data is processed separately from a text file so there may be times when the chart image is updated but the timestamp shows "N/A" because of a problem in retrieving the file. This should correct itself on a future refresh.

The charts will automatically refresh when (i) the app has been recalled from the background as long as a full hour has elapsed since the last refresh, (ii) a new chart location is selected or (iii) the app is terminated and re-launched.

For Additional Assistance

This completes the myCSC iOS App User Guide. If you have additional questions, feedback or require assistance, please contact support@anythingbinary.com.

Brian J Gibson

Anything Binary